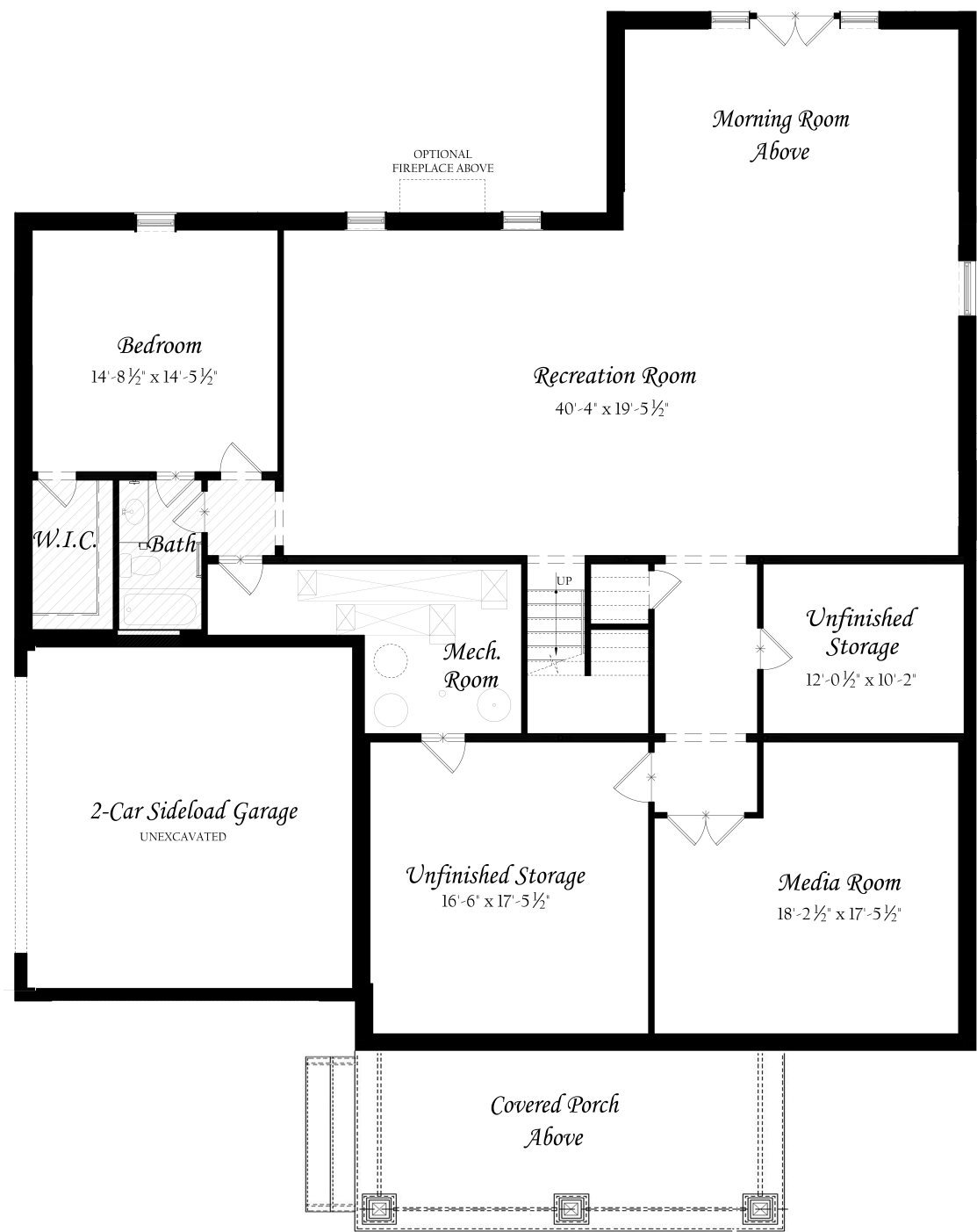


THE  
CHAPMAN FLOOR PLAN

LOWER LEVEL ————— ELEVATION G



THE  
CHAPMAN

GLENWOOD PLACE - HOMESITE 7B  
3202 GLENWOOD PLACE, FALLS CHURCH, VA 22041



PICTURED: ELEVATION G WITH OPTIONS

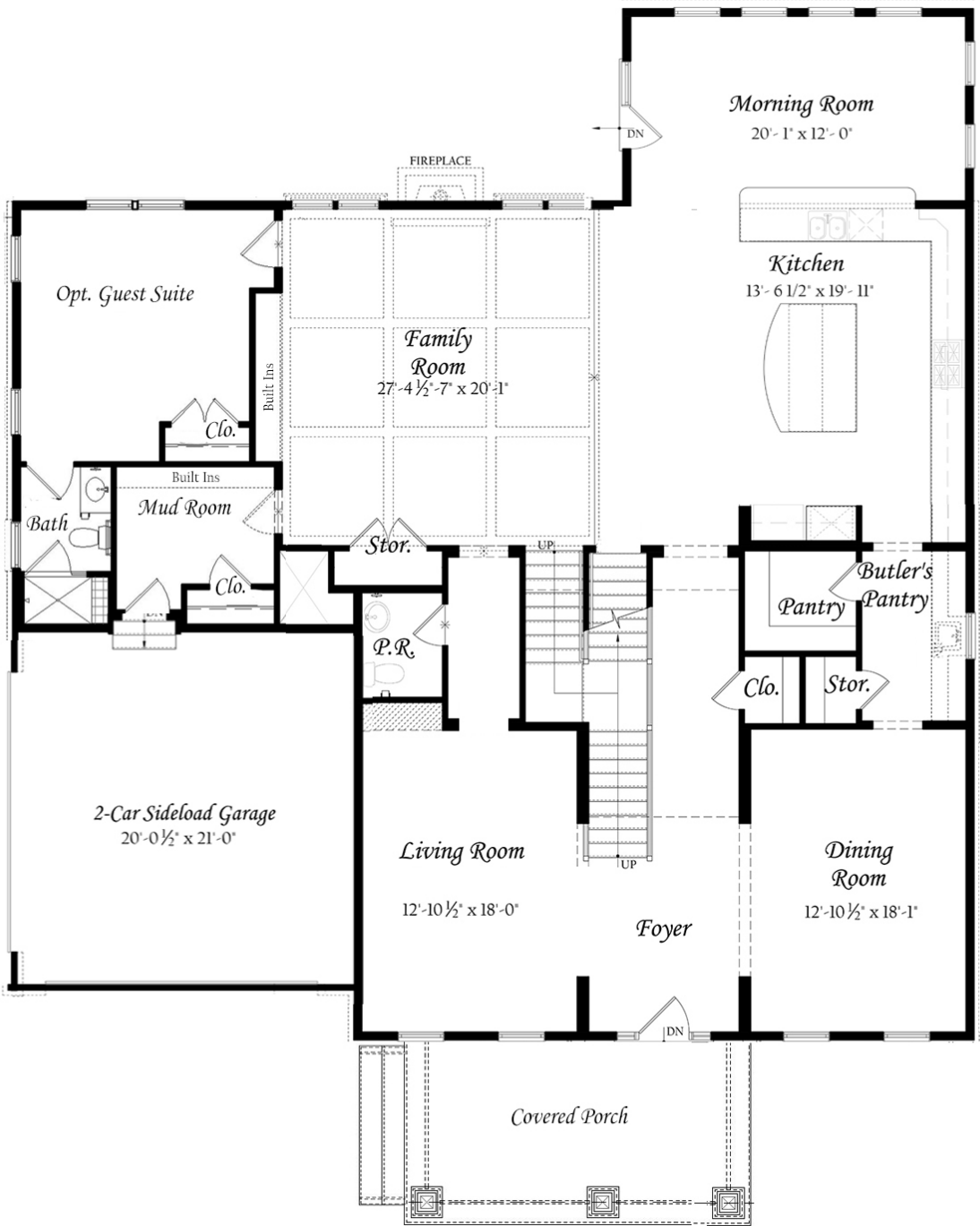
APPROXIMATELY 6,770 SF  
STANDARD WITH 6 BD, 5.5 BA

Evergreene  
HOMES

THE  
CHAPMAN FLOOR PLAN

MAIN LEVEL

ELEVATION G



THE  
CHAPMAN FLOOR PLAN

UPPER LEVEL

ELEVATION G

