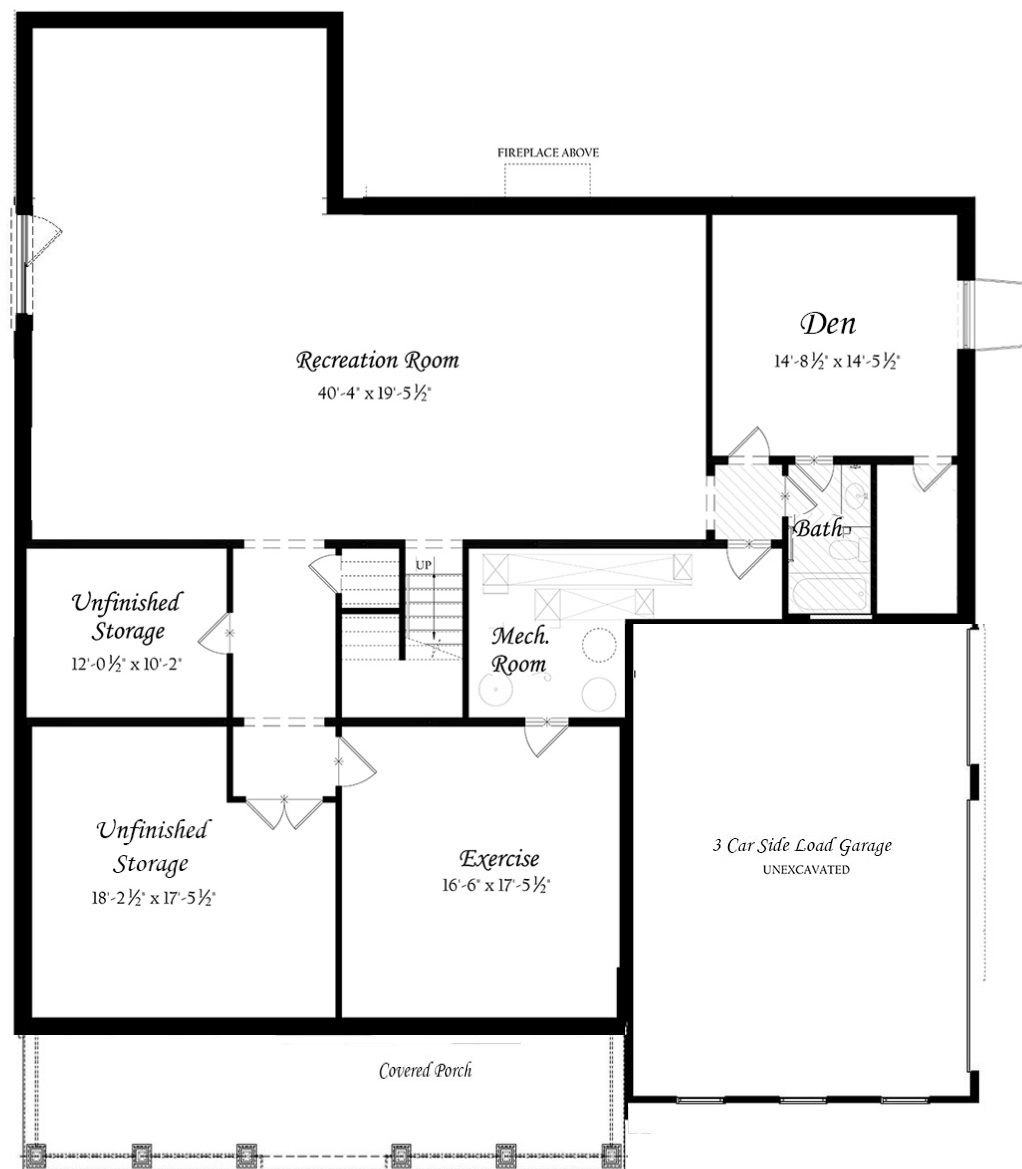


THE  
CHAPMAN FLOOR PLAN

LOWER LEVEL

ELEVATION L



THE  
CHAPMAN

BRADDOCK WOODS - HOMESITE 7

CLIFTON, VA 20124



PICTURED: ELEVATION L WITH OPTIONS

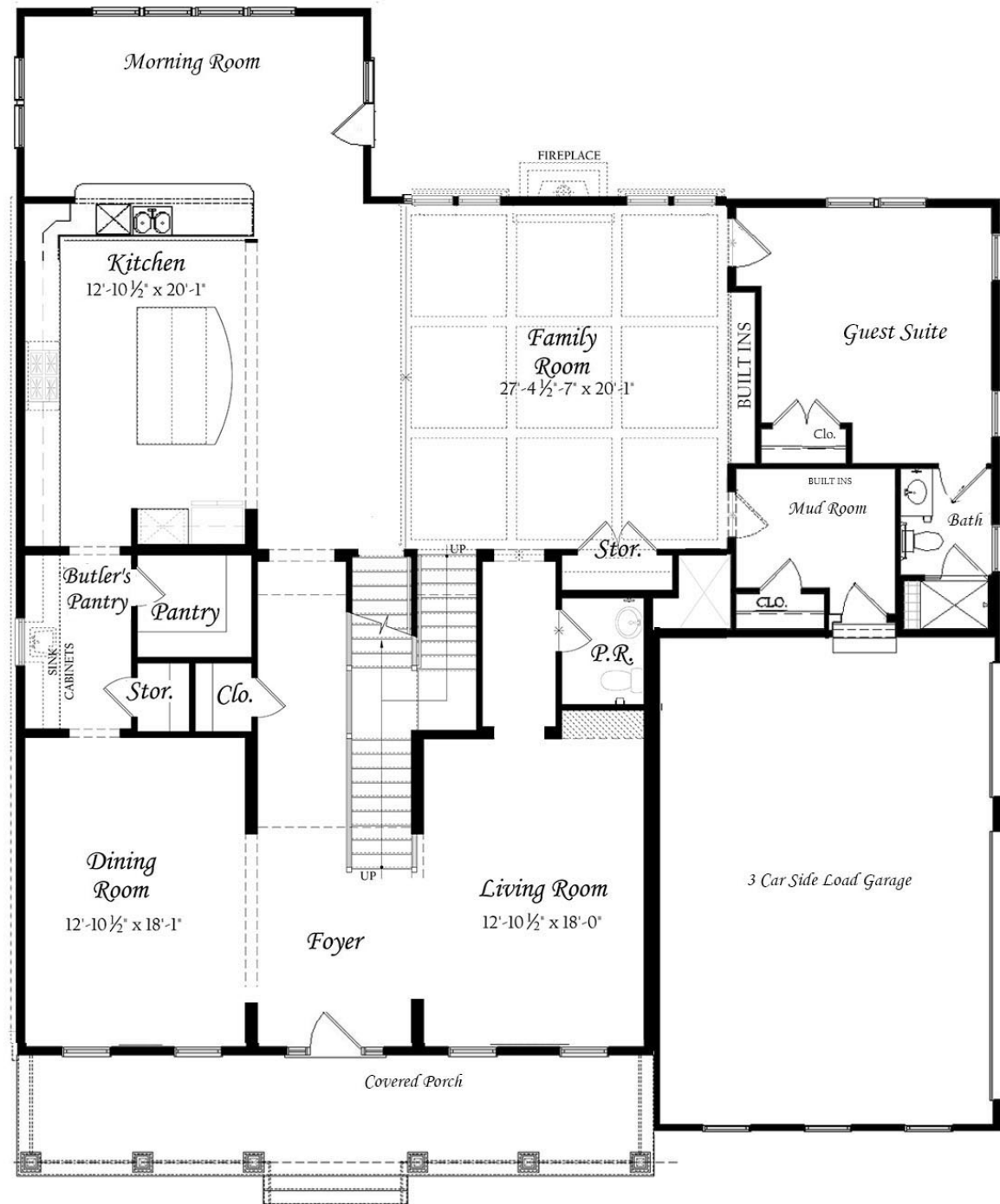
APPROXIMATELY 6,800 SF  
STANDARD WITH 4 BD, 5.5 BA

Evergreene  
HOMES

THE  
CHAPMAN FLOOR PLAN

MAIN LEVEL

ELEVATION L



THE  
CHAPMAN FLOOR PLAN

UPPER LEVEL

ELEVATION L

